

SCA (Stream Corridor Assessment) Survey Report

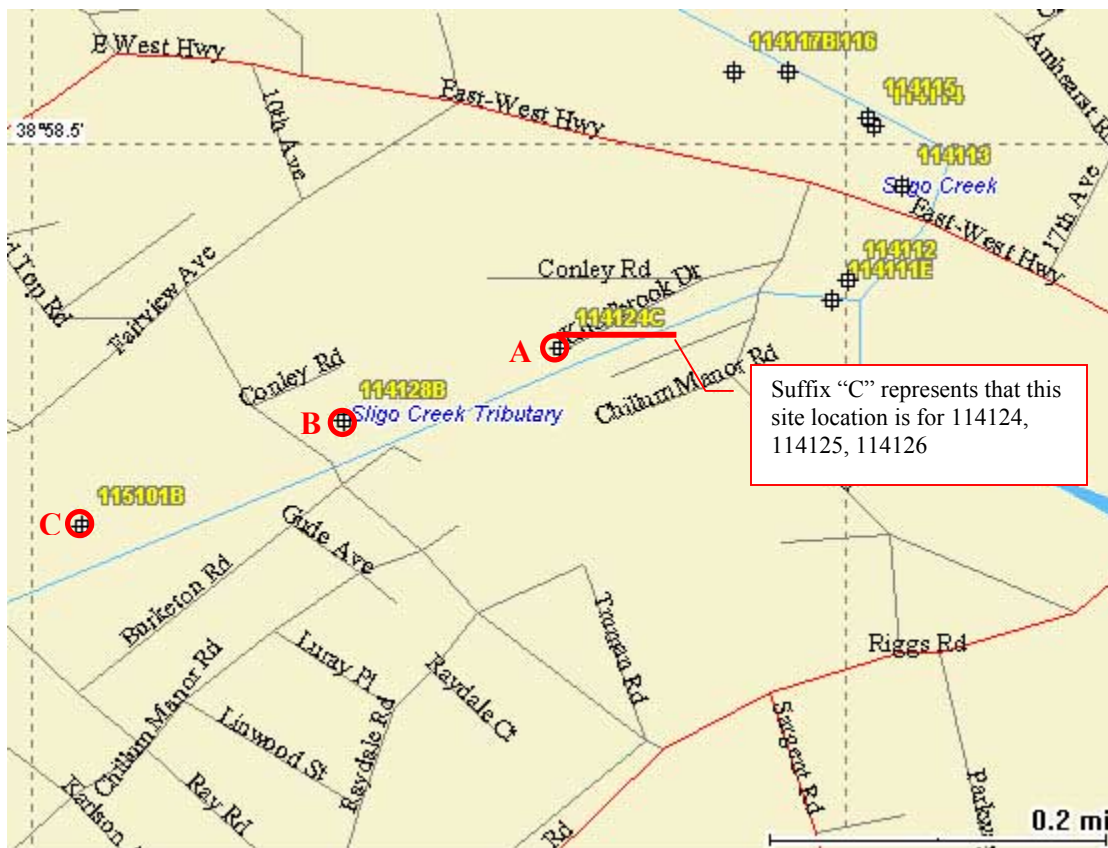
Inspector: Masaya Maeda
Anacostia Watershed Society
Apr. 28, 2004

Problem

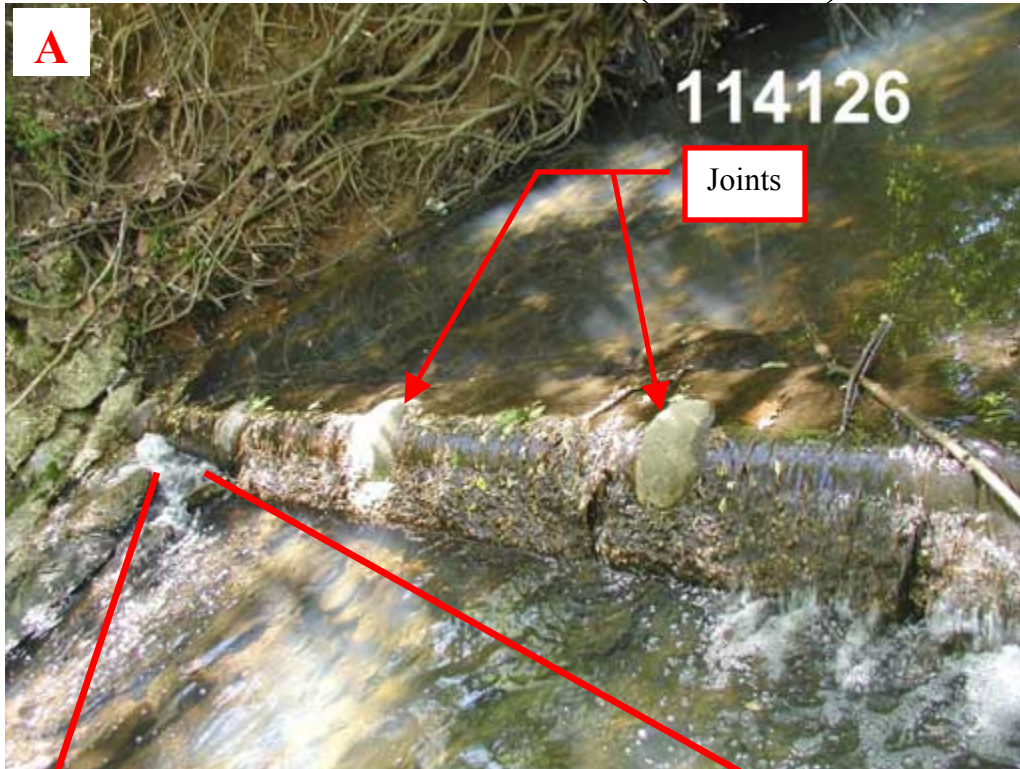
Described with pictures shown below

Location

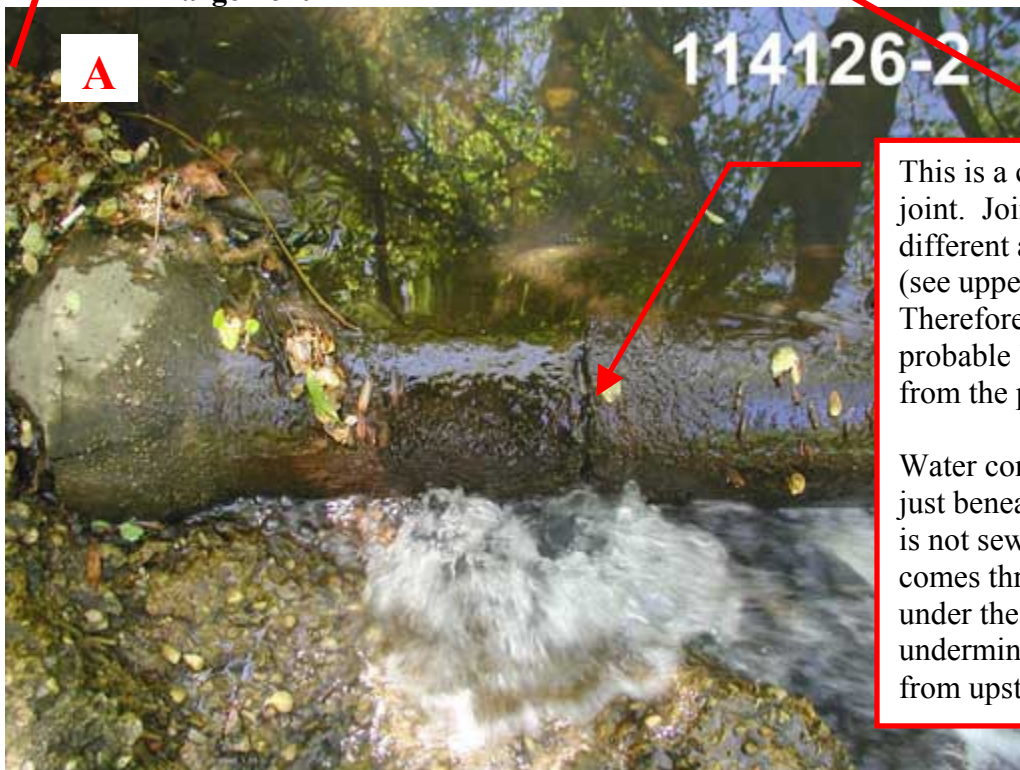
	Site number	Coordinates
(A)	114126	N38°58.374', W76°59.174'
(B)	114129	N38°58.330', W76°59.307'
(C)	115102	N38°58.265', W76°59.469'



Pictures for site A (114126)



Enlargement

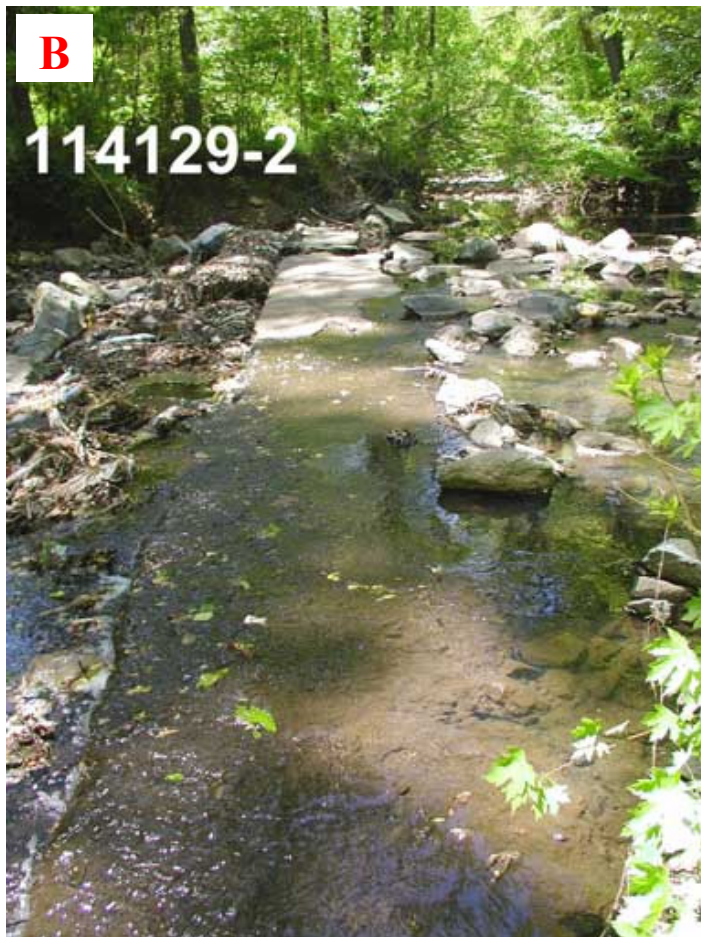
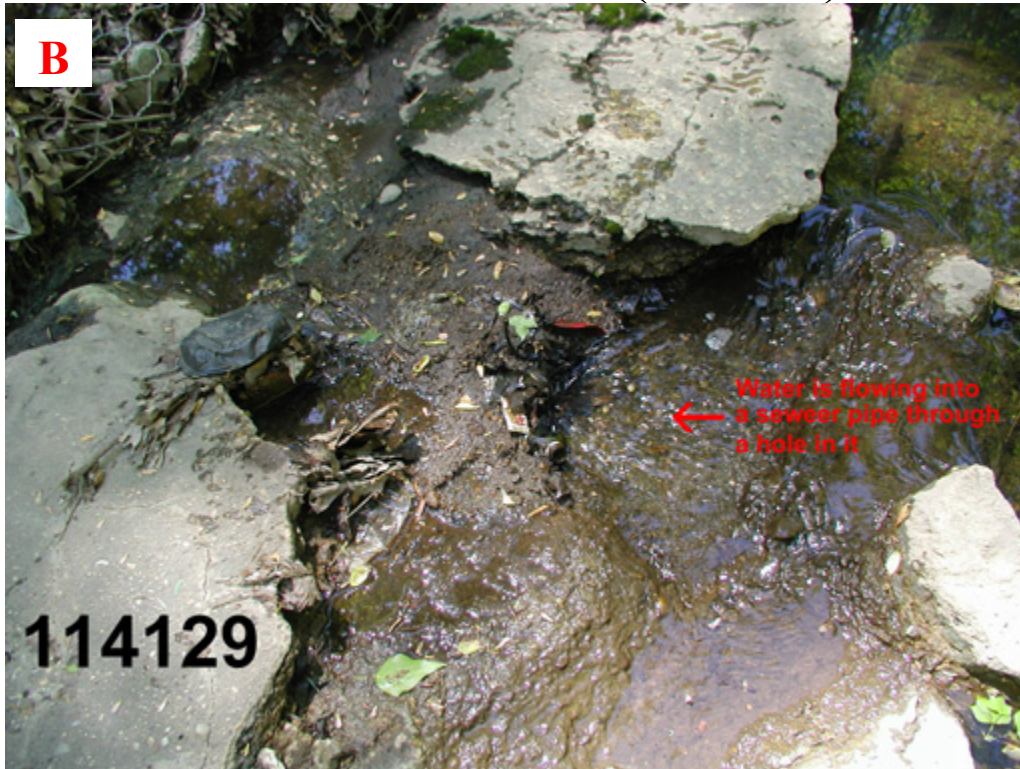


This is a crack not a joint. Joints have different appearance (see upper picture). Therefore, there is a probable leakage from the pipe.

Water coming out just beneath the pipe is not sewage. It comes through under the undermined pipe from upstream side.

This exposed pipe is also a fish barrier.

Pictures for site B (114129)



This big exposed pipe (the diameter is about 42 inches) has a hole in it allowing river water into the pipe (see upper picture). Leakage could not be seen with naked eyes but there is a strong sewage smell around the pipe. The smell is so strong that I even felt sick.

Pictures for site C (115102)



There is no clear sign of leakage with naked eyes. However, the highly exposed area (see lower picture) is fragile. It is likely that a hit from a cobble could break the pipe. This is also a fish barrier.

Enlargement with different angle

