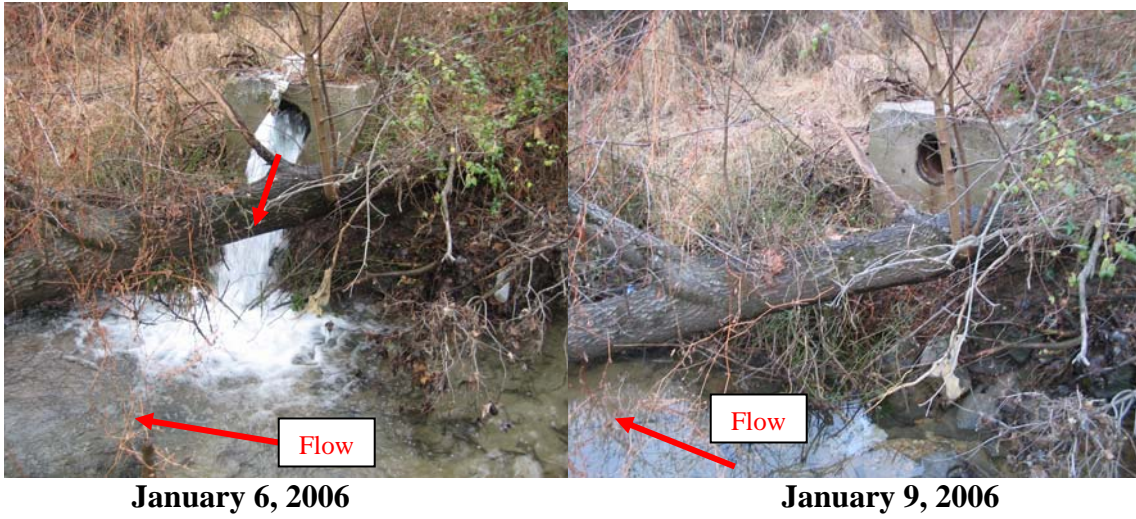


Sligo Creek –WSSC Discharge Photos

At the WSSC Outfall



Approximately 30 yards below the WSSC outfall (1/9/06)



Signs of de-chlorination tablets present down to the instream pond (1/9/06)



Blueish-green water color depicting de-chlorination attempt



Dead salamanders and worms found approximately 100 yards downstream of WSSC outfall in a pool (1/9/06)



Dead Worm

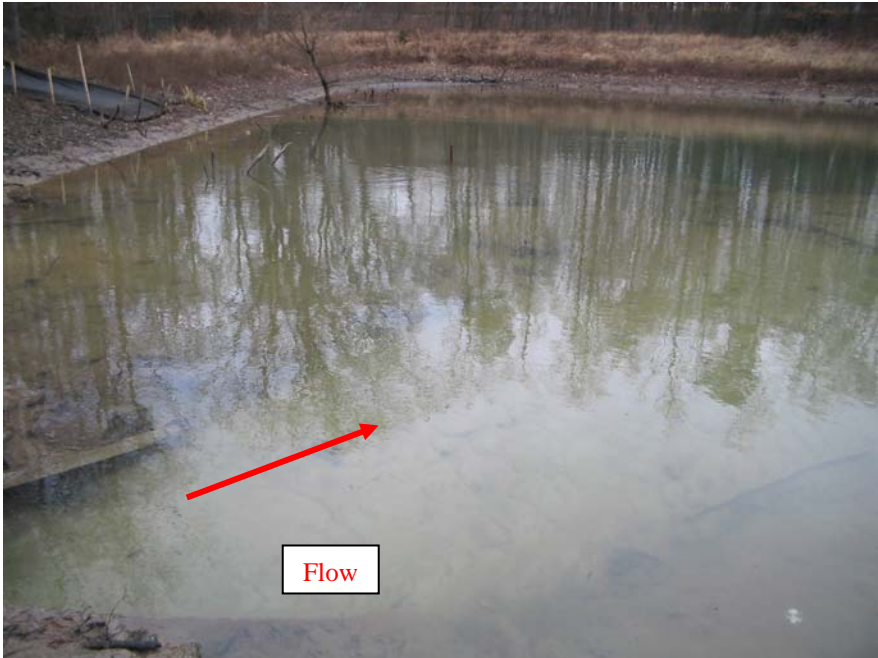
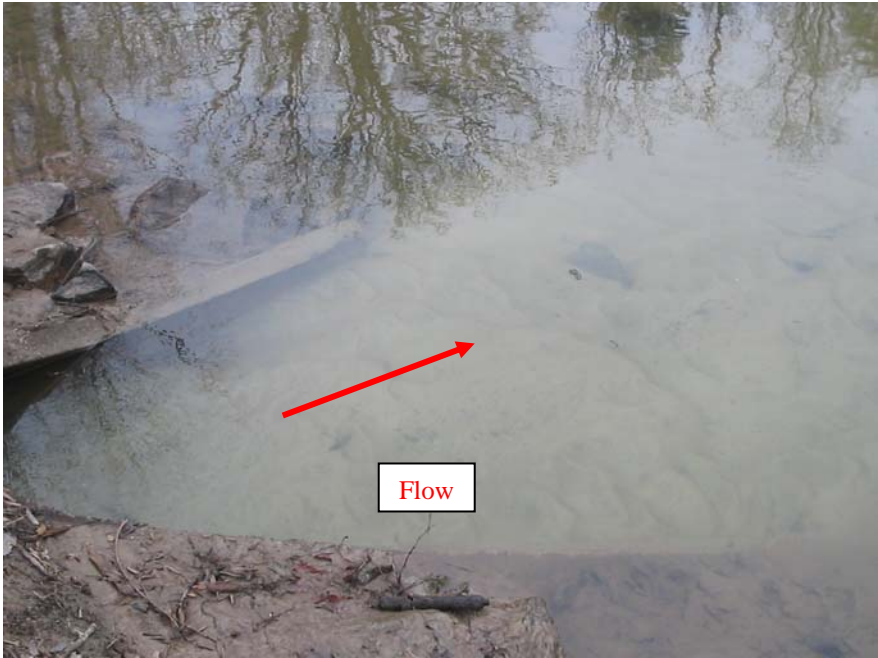


Dead Salamander



Dead Salamanders (Placed on Log for picture –found on bottom of pool)

Outlet from Sligo Creek into the Pond's Cell #2 (1/9/06)



Dead fish (and dying fish) found in the ponds that were to be dredged (1/9/06)



Dead fish found below University Boulevard and between Playground and University Boulevard (1/9/06)

